



Learning Objectives

- Learn how the Nighttime Economy is the Daytime Economy



Learning Objectives

- Learn how the Nighttime Economy is the Daytime Economy
- Discover ways to promote a self-regulatory system



Learning Objectives

- Learn how the Nighttime Economy is the Daytime Economy
- Discover ways to promote a self-regulatory system
- Learn ways to build a Public Safety and Compliance Team



Learning Objectives

- Learn how the Nighttime Economy is the Daytime Economy
- Discover ways to promote a self-regulatory system
- Learn ways to build a Public Safety and Compliance Team
- Apply the top ten list criteria to compliance strategies



The Night Economy is also the Day Economy

Daytime	Nighttime
<ul style="list-style-type: none">• Food Companies• Beverage Companies• Equipment and Supplies• Graphic Artists• Printers• Weekly Papers and Magazines• Pest Control• Services (Banking, Insurance, Legal)• Government (Licensing, Tax)• Waste Management• Fashion• Spas• Event and Party Planners	<ul style="list-style-type: none">• Restaurants• Cafes• Take-out• Vendors• Nightclubs• Cinema• Theater• Markets• Arenas• Stadiums• Transportation• Parking• Security



The Night Economy is also the Day Economy

Daytime	Nighttime
<ul style="list-style-type: none">• Police Patrol• Community Oriented Policing• Fire Inspections• Health Inspections• License Inspections• Building Inspections• Public Works – Vendors• Public Works – Buskers• Public Works – Outdoor Seating• Alcohol Regulation Enforcement• Trash Management• BID Ambassadors• Public Transportation• Parking Security and Enforcement• Traffic Control• Event Management	



The Night Economy is also the Day Economy

Daytime	Nighttime
<ul style="list-style-type: none">• Police Patrol• Community Oriented Policing• Fire Inspections• Health Inspections• License Inspections• Building Inspections• Public Works – Vendors• Public Works – Buskers• Public Works – Outdoor Seating• Alcohol Regulation Enforcement• Trash Management• BID Ambassadors• Public Transportation• Parking Security and Enforcement• Traffic Control• Event Management	<ul style="list-style-type: none">• Police Patrol



Self-regulatory Systems



Laws evolve from the perception of abuse, when there is no real abuse, there is no need for laws.

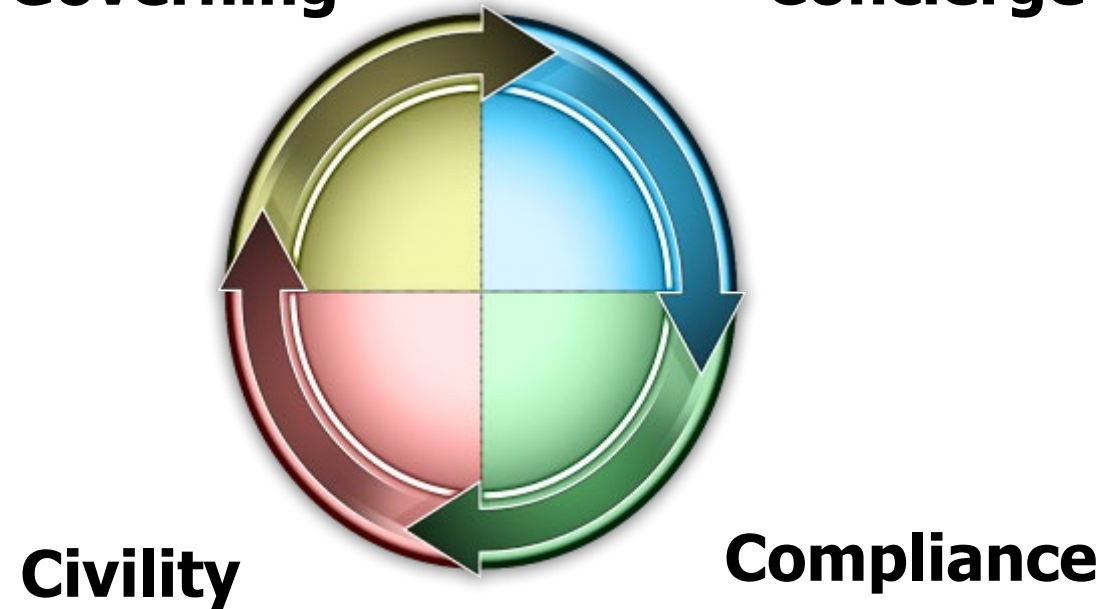
*Lt. Debra Setzer,
El Cajon Police Department*



Safety in Social Districts

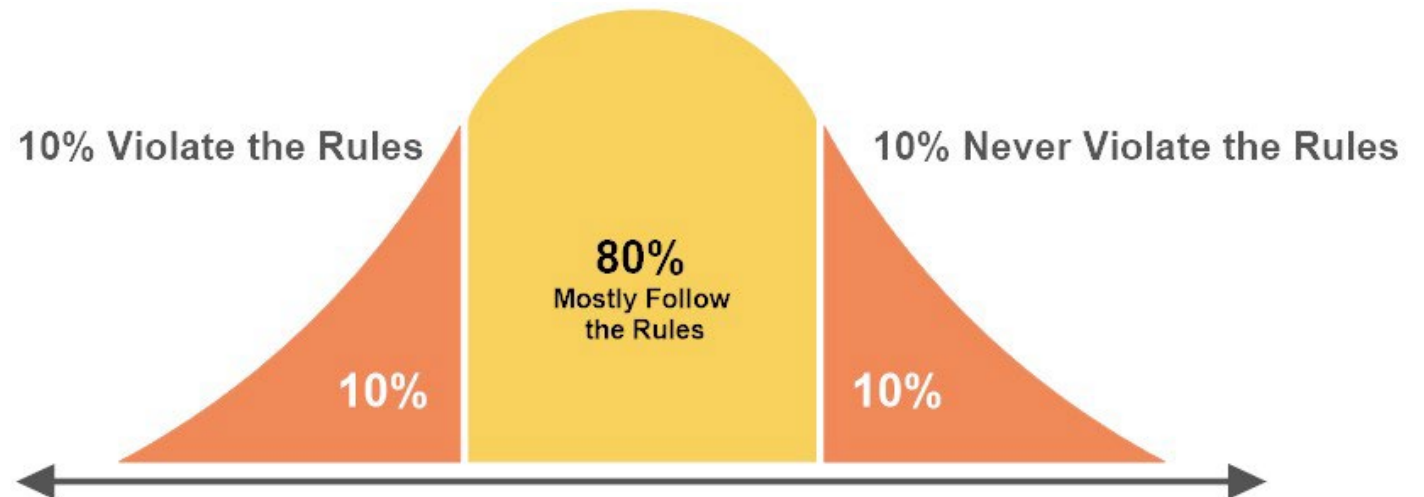
Concierge Governing

Concierge Policing



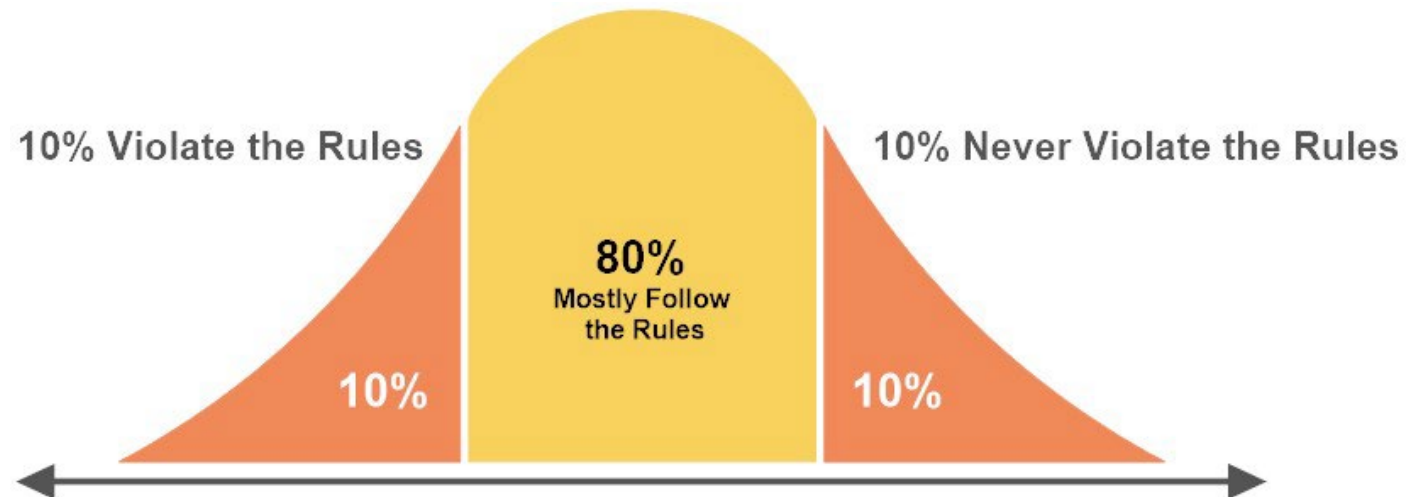
Responsibility and Response

Don't know	Know	Know
Don't know	Know, don't know how	Know how, don't care



Responsibility and Response

Don't know	Know	Know
Don't know (Educate)	Know, don't know how (Train)	Know how, don't care (Enforce)



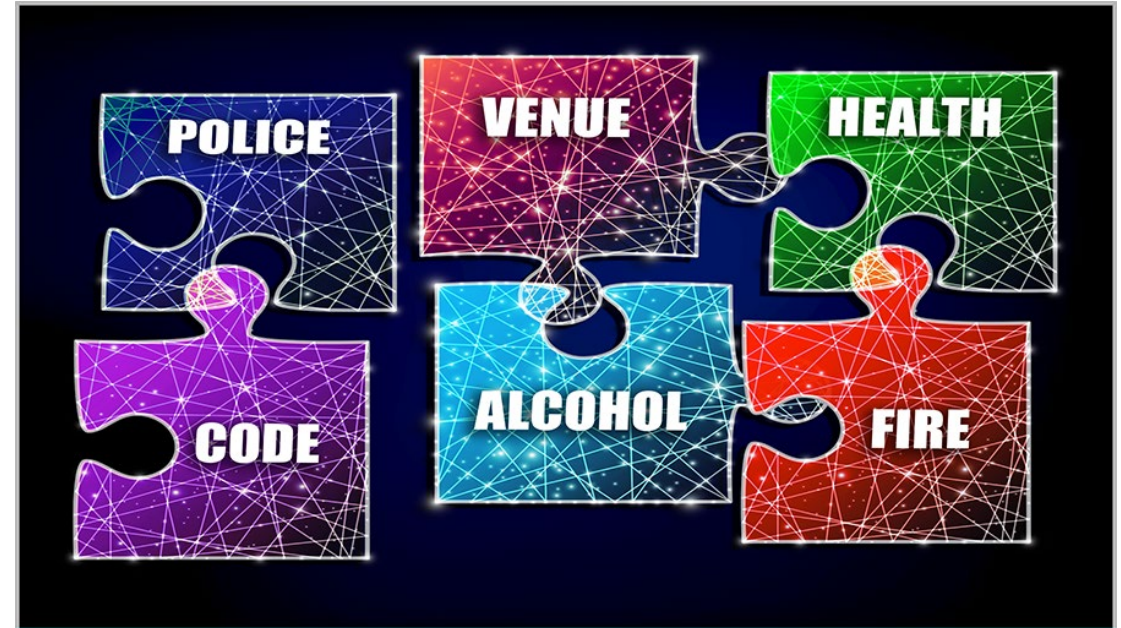


Public Safety and Compliance

NIGHTLIFE SETTINGS are typically high-intensity environments with complex dynamics and risk factors. A continuum of stakeholders, principal of which are police and venue security, are invested in protecting patrons from violence, sexual assault, theft, underage drinking and impaired driving.

Public Safety and Compliance

PUBLIC SAFETY is guided by an interagency collaboration to collect and organize data, identify at-risk venues and patron behavior, and coordinate early assistance for improved compliance.



Concierge Government

Establish a Safety Foundation

An ideal foundation for safety in social districts requires a system that responds to each scenario.

- A system to convey the rules and regulations of the many agencies that license, regulate, and enforce new businesses.
- A system for existing businesses to access information when they need technical assistance.
- A proactive rather than reactive system to monitor compliance and address at-risk businesses that generate public safety and quality-of-life impacts

Application and Review Process



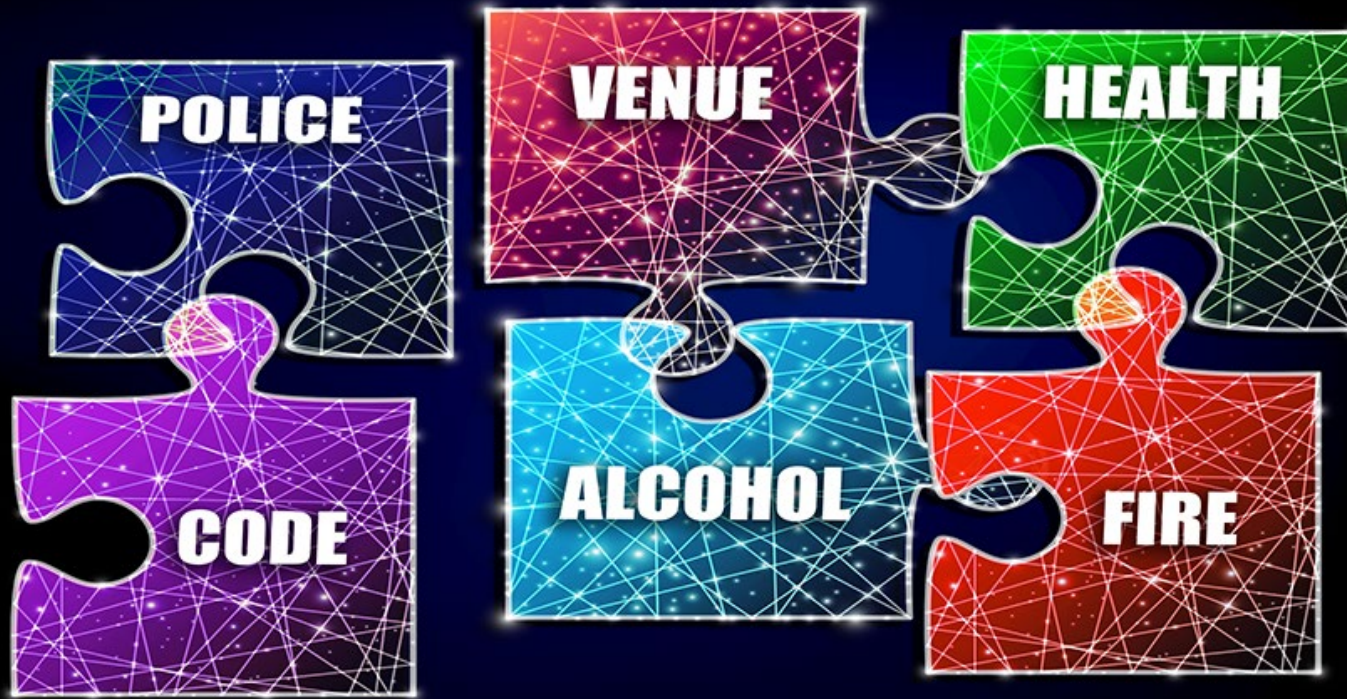
- **Licensing and Permitting** process that is efficient and user-friendly such as a One-Stop Shop.
- **Means to Communicate Rules and Regulations** clearly to both business applicants and enforcement agents.
- **Inter-Agency Collaborative** to review licenses, permits, and safety plans.
- **Forum for the Community** to provide input and feedback on new & reviewed licenses.
- **Administrative Process** that is fair and able to respond swiftly to suspend or revoke licenses when appropriate.





Evidence Based Early Assistance





Public Safety Alliance

Public Safety Sub-Committee

- Primary

- License and Compliance: Alcohol
- License and Permit: Business, Food, Entertainment, Outdoor Seating
- Safety: Police, Fire, Code/By-law Compliance

Secondary

- Transportation: Traffic, Parking, Shared Service (taxi, e-hail)
- Public Works: Trash Management – Outdoor Seating
- Planning and Zoning
- Health and Social Services

Timeline and Process



Data Collection and Analysis

Collect baseline data

Collect data 6 mos. after baseline data

Collect data 12 mos. after baseline data



Social District Inventory

STOREFRONTS

- Total Number
 - # by Type
 - # by Social Venue
 - # with Alcohol
 - % Locally Owned
- Social Options
 - # with Live Music
 - # with DJ/Dance
 - # Theater, Cinema, Sport
 - # Events/Festivals with Capacity
- Occupancy (Seating)
 - Individual
 - District Combined
 - # Seats for Live Music
 - # Seats for Other Entertainment



Social District Inventory

STOREFRONTS

- Total Number
 - # by Type
 - # by Social Venue
 - # with Alcohol
 - % Locally Owned
- Social Options
 - # with Live Music
 - # with DJ/Dance
 - # Theater, Cinema, Sport
 - # Events/Festivals with Capacity
- Occupancy (Seating)
 - Individual
 - District Combined
 - # Seats for Live Music
 - # Seats for Other Entertainment

PUBLIC COSTS

- Public Safety
 - Crime Data
 - Police
 - Code Compliance
 - Traffic and Parking
- Public Space
 - Trash and Litter Pick-up
 - Sidewalk Maintenance
 - Public Restroom Facilities
- Public Administration



Venue Compliance Measures

ALCOHOL SERVICE

- Sale to Underage Person
- Underage in Possession
- Service to Intoxicated Person
- False Identification
- Place of Last Drink
- Server Training Requirement

FIRE AND EMERGENCY SERVICES

- Occupancy Management (maintaining legal)
- Exits – Signage
- Exits – Blockage
- Equipment – Alarms, extinguishers, lighting

MUNICIPAL LICENSING AND INSPECTIONS

- Sound
- Outdoor Seating
- Trash

HEALTH

- Food Safety Certification
- Inspections

VENUE MANAGEMENT

- Fights or Aggressive Behavior
- Patron Theft of Property (e.g. Smart Phone)
- Crowd Management – Occupancy Violation
- Sound Management – Disturbances to Residents

PLACE OF LAST DRINK REPORTS

- Name of Venue – Frequency of Citations
- Blood Alcohol Level – Number of Drinks Consumed

UNLICENSED VENUES

- Party Buses
- Alcohol Sales without License
- Underage Possession/Consumption
- Parking lot – Alcohol Consumption



Venue Resources

TRAINING SERVICES

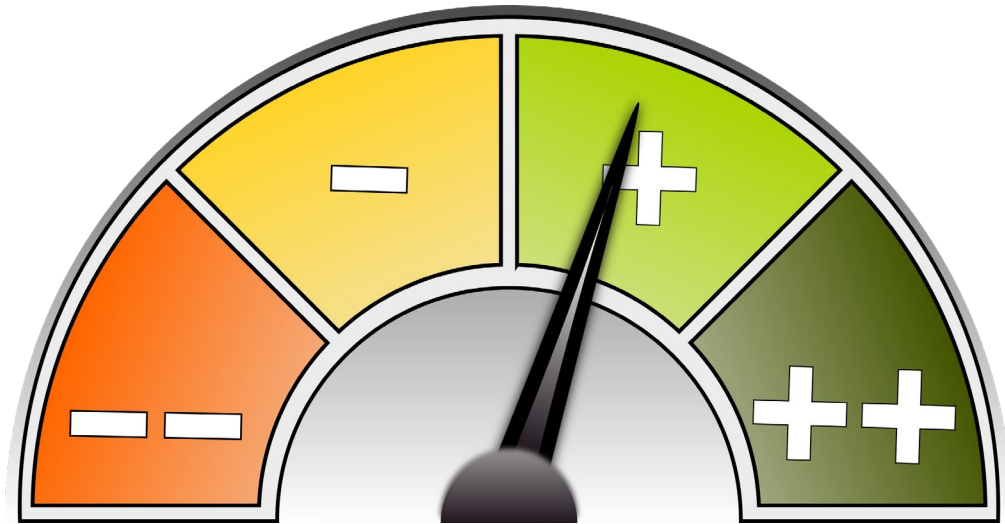
- Responsible Beverage Service Training
- Gender Violence Prevention
- Security Training
 - Training by Police
 - Active Shooter
 - Other Security Training

OTHER PROGRAMS

- Food Safety
- Fire Safety
- Accessibility Standard
- Workplace Violence & Harassment Policies
- Due Diligence for Supervisors
- Incident Investigation
- Workplace Hazards
- Personal Protective Equipment
- Slip, Trip and Fall Prevention

Collaborate to Monitor/Assist

Monitoring systems can be used to identify risk patterns in the business community before problems arise.



Inventory of Monitoring Systems

- Code Compliance Task Force
- Regular Meetings with Businesses and Residents
- Early Assistance and Mentoring for businesses with potential safety risks.
- Strategic Intervention with high risk and egregiously non-compliant businesses.
- Incentives and Recognition for well-performing businesses who comply with rules.
- Motivating Patron Civility
- Safety Plans created collaboratively by police and businesses
- Last Drink Data from DUI offenders





Setting Priorities

- Top Ten Place of Last Drink Venues
 - BAC Greater than 0.15%
 - On the Previous List
 - Ratio to Seating Capacity
- Top Ten Call for Service Venues
 - Fights
 - Sexual Assault
 - Sound Disturbances
- Top Ten Code Violations
 - Inspections
 - Complaints



Outcomes from a Public Safety Team

- **Centralize** inspection and service call data
- **Educate** new and existing businesses
- **Facilitate** more effective intervention with at-risk businesses
- **Provide cross-training** and collaboration opportunity for multiple city agencies
- Develop recommendations on **policy and resource allocation**
- Encourage **coordination and cooperation** among all departments
- Address the **complex issues** surrounding the nighttime economy
- **Solve problems** before they become chronic issues

